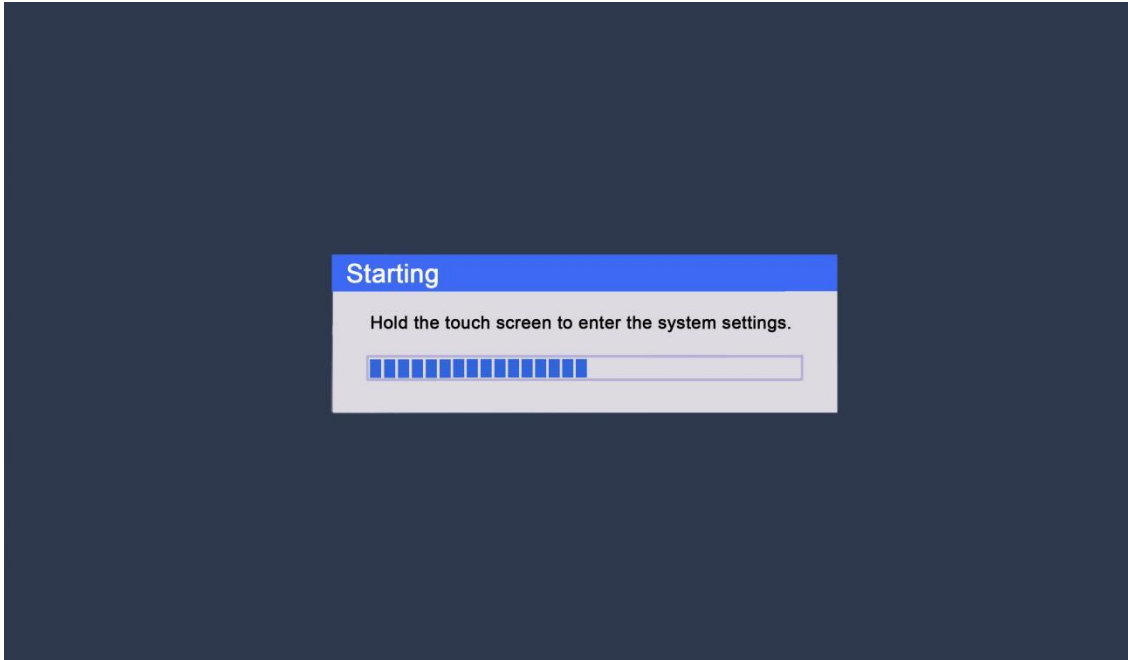
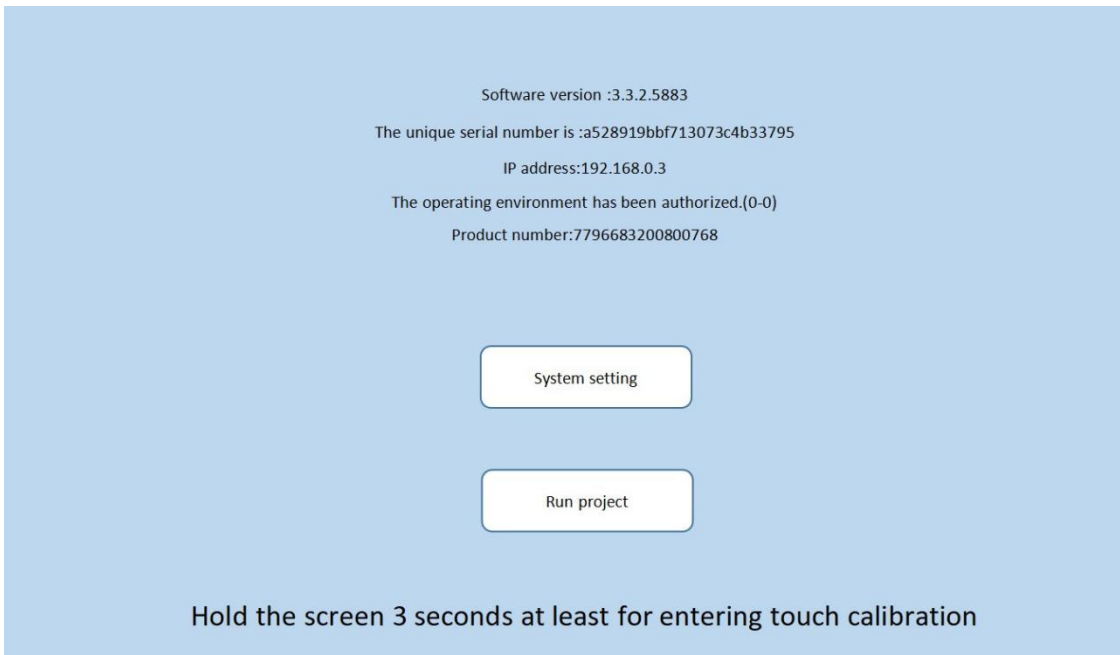


Set the date and time

1. When the device is powered on again, when the following screen appears on the screen, tap the screen immediately



2. Enter the system interface, as shown in the figure below, click the button "System setting"



3. Enter the setting interface, select the time parameters, as shown in the figure below, and modify the time. After the modification is completed, click the "OK" button to confirm. After closing the setting interface, click "Run project" to enter the program running interface.

Software version :3.3.2.5883
The unique serial number is :a528919bbf713073c4b33795

TPC Settings

System Backlight Buzzer Touch Time USB Network

Time setting

Friday

2022 Year 7 Month 12 Day

10 Hour 37 Minute 52 Second

1	2	3
4	5	6
7	8	9
Del	0	<-
Tap		

Hold the screen 3 seconds at least for entering touch calibration