

Pyxis[®]

SP-395T Tolytriazole Handheld Meter Quick-Start Guide



Measurement Menu

- ALWAYS use a pipette when inserting sample into sample cell.
- Reading will highlight **BLUE** when locked-in..



Scan QR Code to Download User Manual

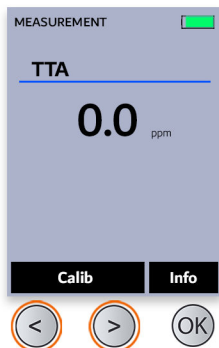


Calibration Process

Scan QR Code for Tutorial Video



Press either the 'Left' or 'Right Arrow' button to select 'Calibration Menu'.



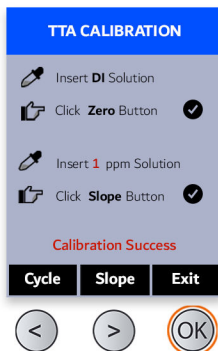
Rinse (3x) and insert DI water. Then press the 'Left Arrow' button to select 'Zero'.



Rinse (3x) and insert TTA Calibration solution. Then press the 'Right Arrow' button to select 'Slope'.



A calibration Success message will appear, and your SP-395T is now calibrated.



Purchase **TTA Calibration Solutions**

